



“my
Reference.”

LOOSELAY

TILES & PLANKS

Gerflor[®]
theflooringgroup

PIONEER IN LOOSELAY FLOORING SOLUTIONS



2018
Carpet plank format

2016
Use of Econyl
yarn based on
recycled content

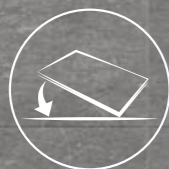
2019
**CREATION 55/70
LOOSELAY**
Launch of the new looselay
LVT with unique Grip-Wave
backlayer

2013
**TACKY TILE &
SENSO EASY**
With integrated tackyfier

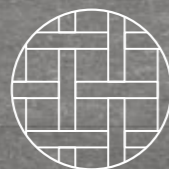
2009
SAGA²
First comfort tile
cork backing - 15dB acoustic

1991
SAGA
First comfort tile 50x50cm

1989
Creation of Gradus
carpet tiles



Removable
installation



Mix & Match
Design & Formats

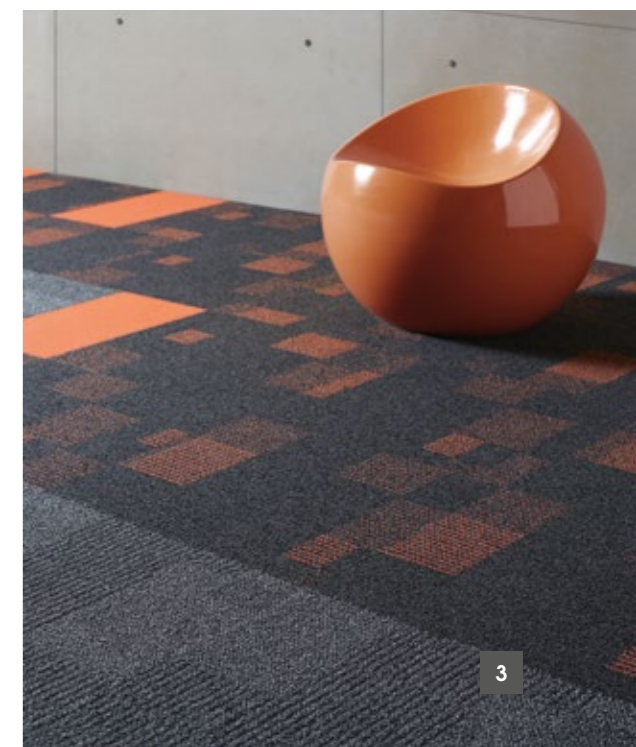
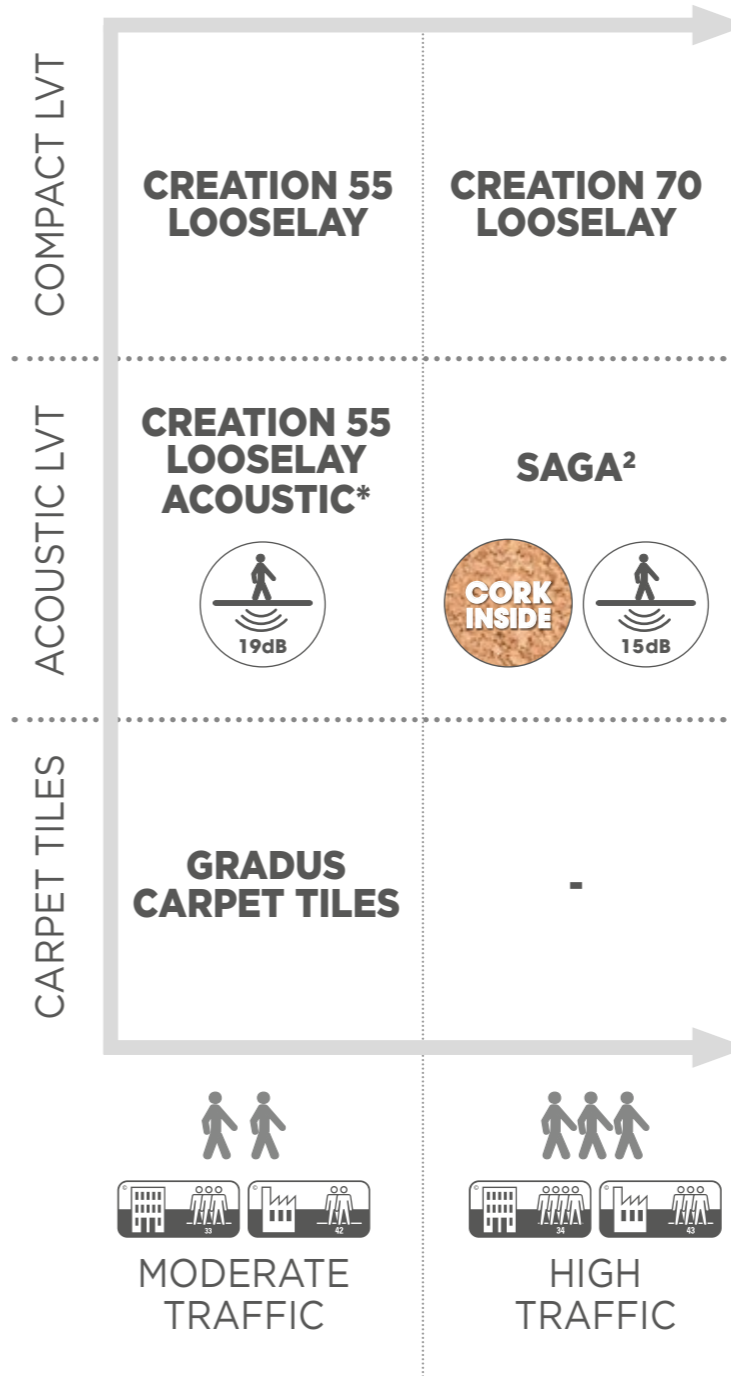


Fast
installation



Installation over
raised access floor

LOOSELAY LVT & CARPET TILES FOR ALL TRAFFIC





A REMOVABLE INSTALLATION



2 OPTIONS



INSTALLATION WITH TACKYFIER



Application of the pressure sensitive adhesive

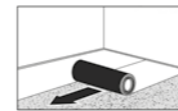


Installation

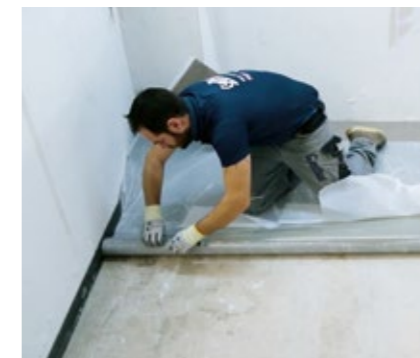


Smoothing

Free installation for Creation 55 Looselay (up to 30 sqm)



FIX & FREE INSTALLATION



Unrolling of the Fix & Free 740



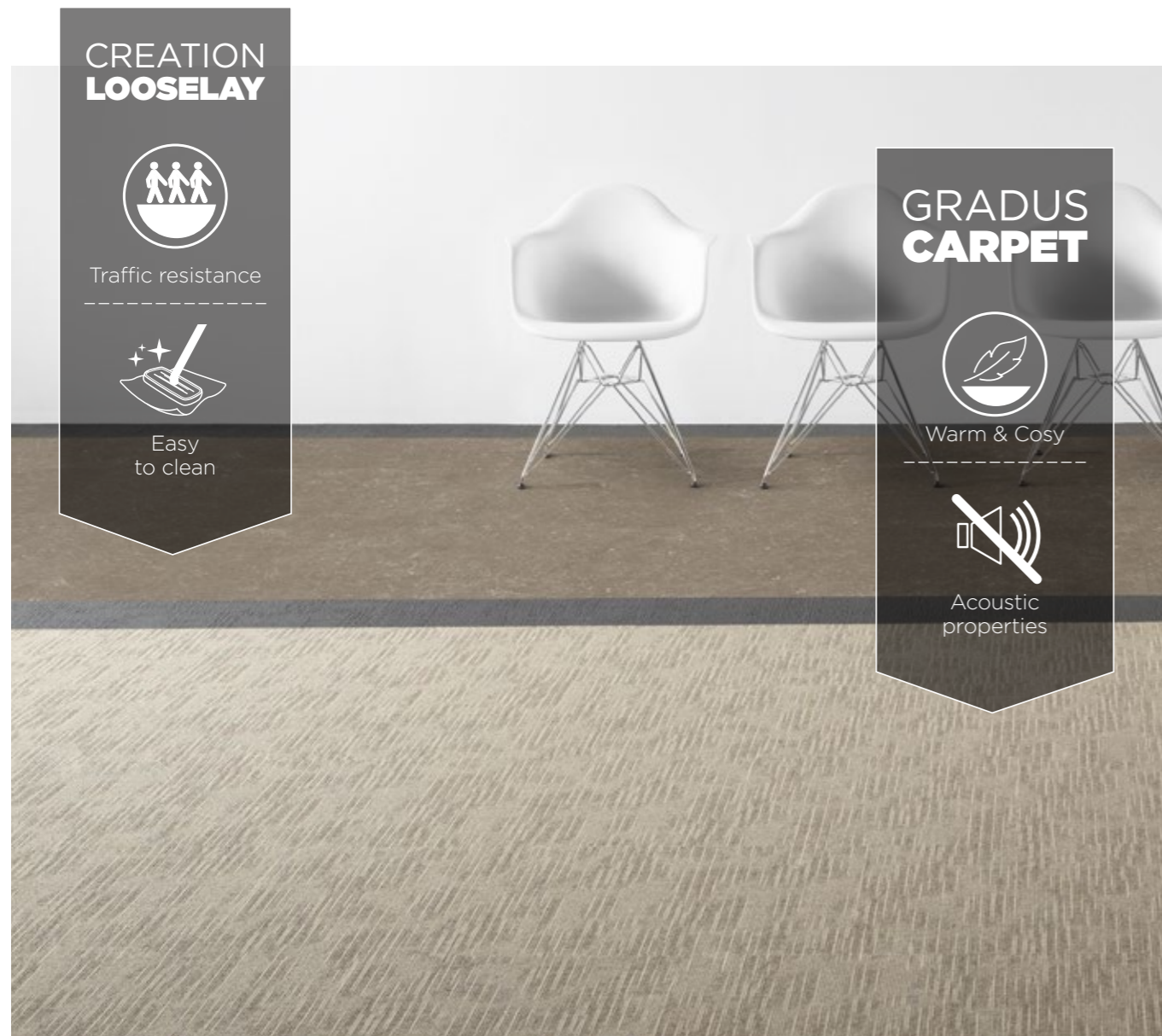
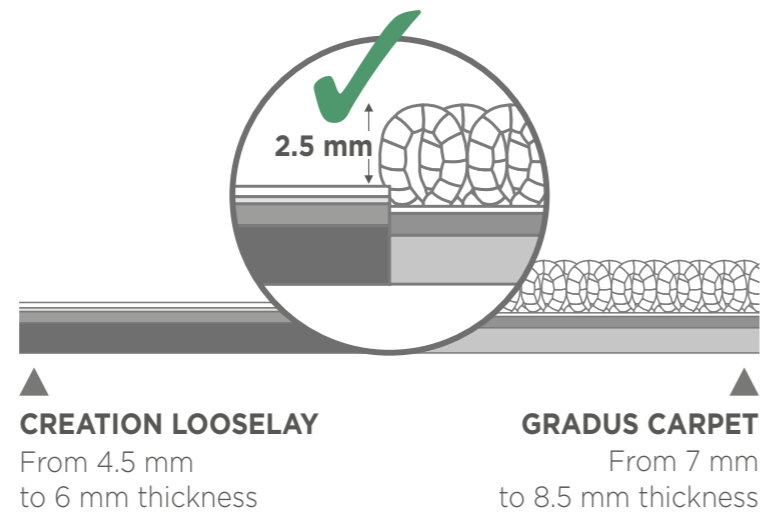
Laying



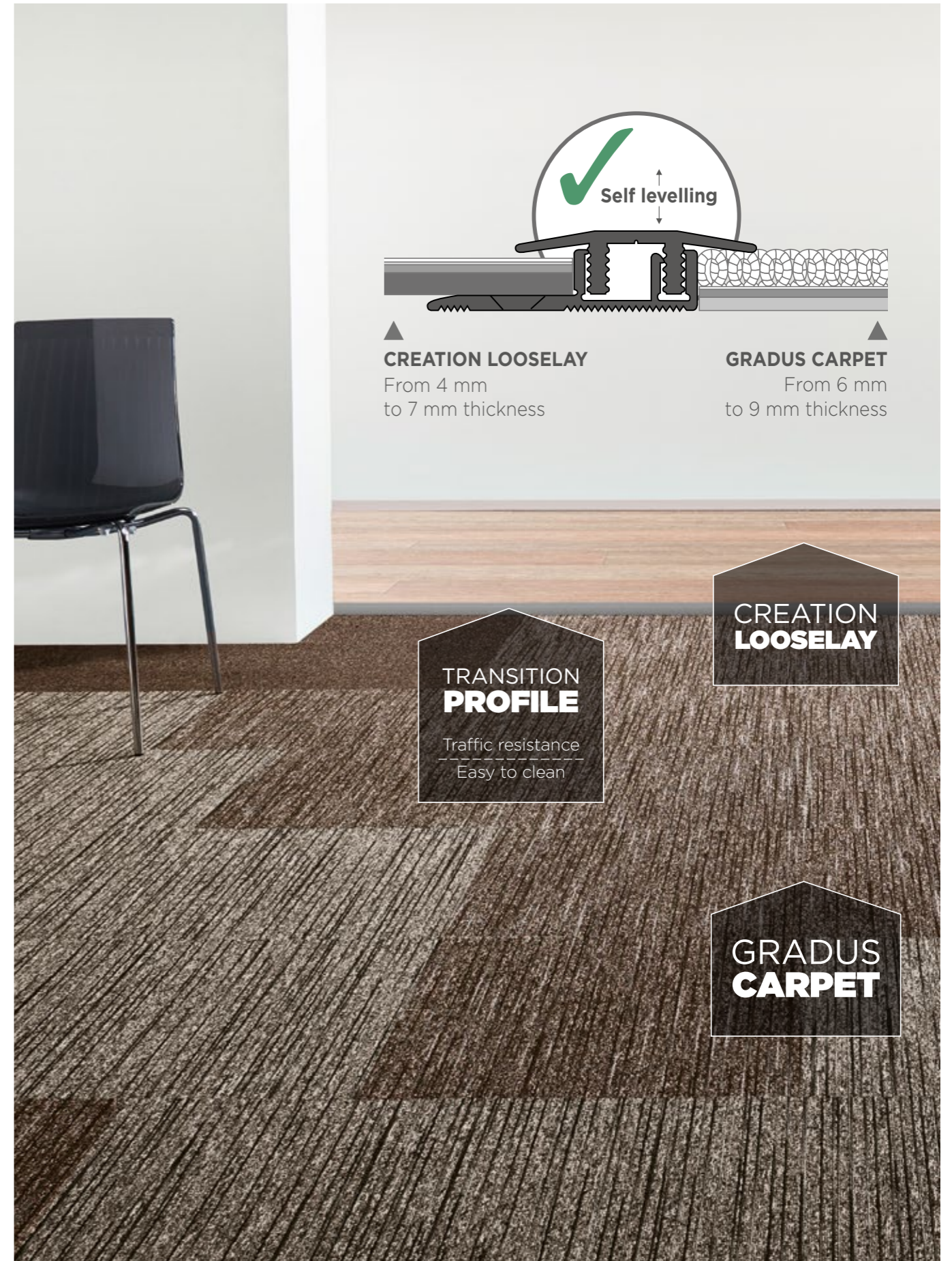
“ It is so simple to install and mix & match colors with removeable tiles! ”
Steve - Installer

**MIX & MATCH COLORS & DESIGNS
TO GET THE BEST OF BOTH WORLDS!**

**DARE TO
COMBINE
LVT &
CARPET
TILES !**

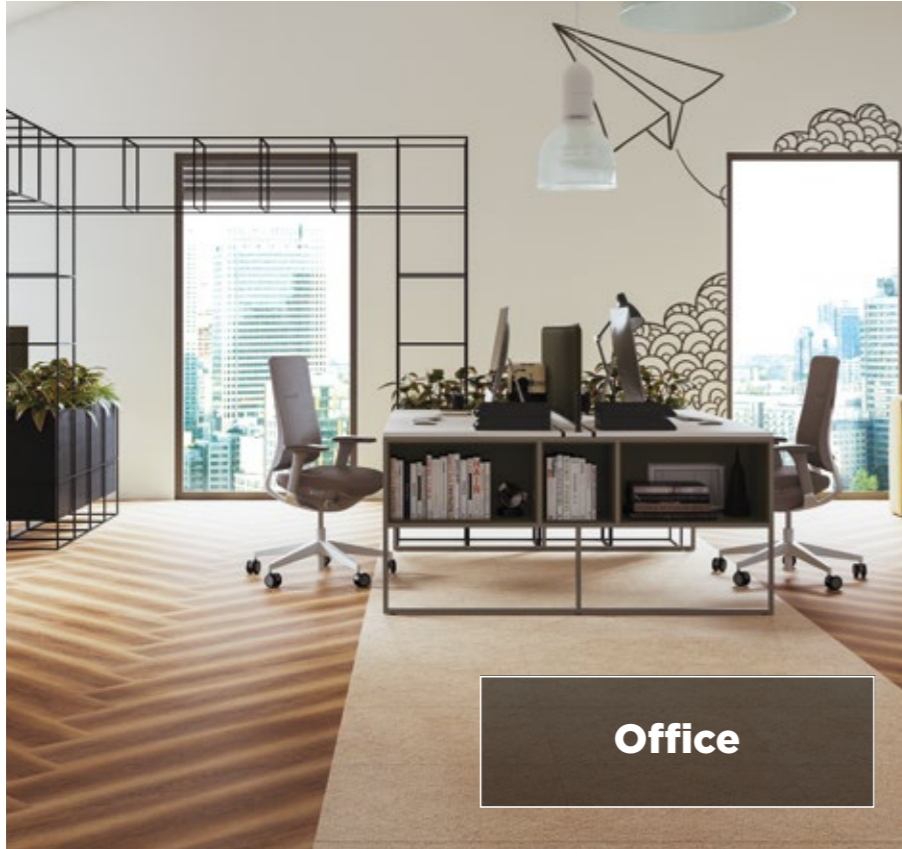


OPTION 1 - **EDGE TO EDGE**

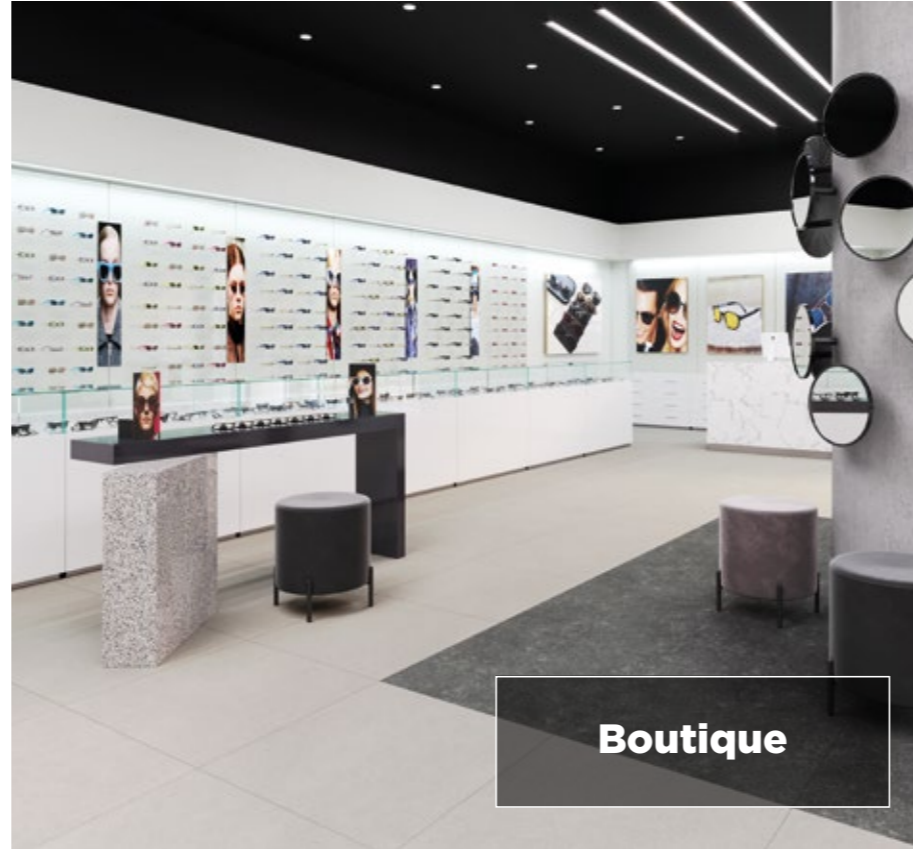


OPTION 2 - **TRANSITION PROFILE**

**LOOSELAY TECHNOLOGY & DESIGNS
FOR MULTIPLE APPLICATIONS!**



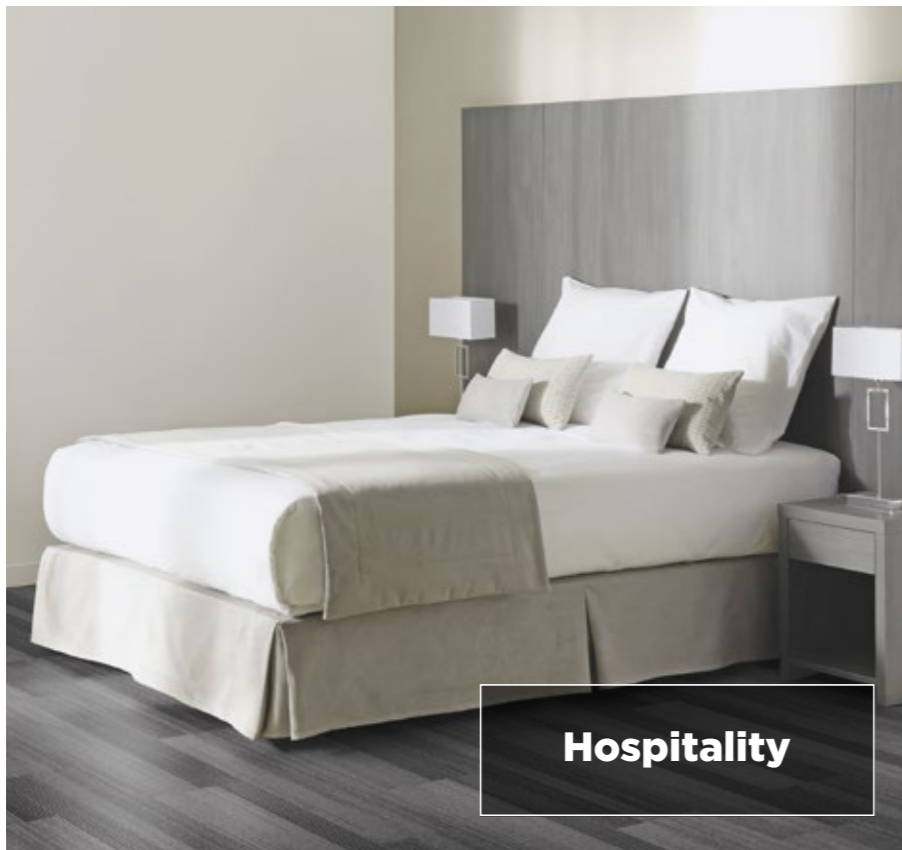
Office



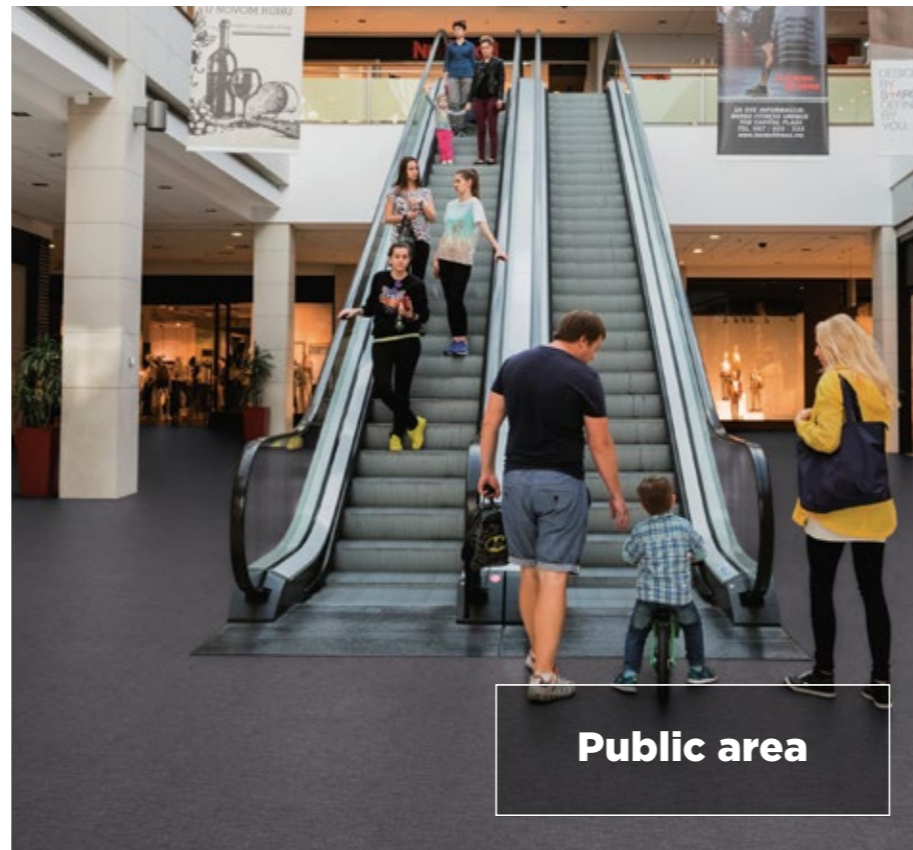
Boutique



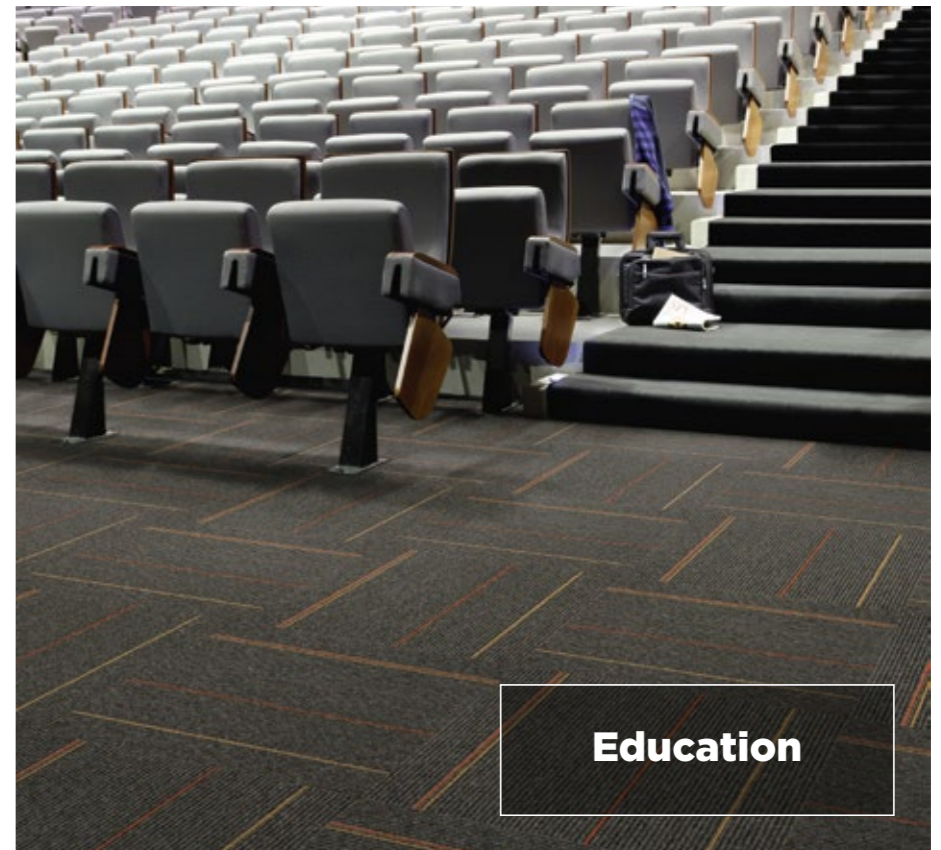
Superstores



Hospitality




Public area



Education

MAKE YOUR CHOICE IN OUR LOOSELAY TILES & PLANKS COLLECTION !

	CREATION 55 LOOSELAY	CREATION 55 LOOSELAY ACOUSTIC	GRADUS CARPET TILES	CREATION 70 LOOSELAY	SAGA ²
INDOOR AIR QUALITY	 TVOC <10	 TVOC <10	 TVOC <100	 TVOC <10	 TVOC <10
REACH COMPLIANT					
FIRE RESISTANCE	 Bfl-s1	 Bfl-s1	 Bfl-s1	 Bfl-s1	 Bfl-s1
 TRAFFIC RESISTANCE	+	+	+	++	++
 CASTO CHAIR RESISTANCE	+	+	+	++	++
 SOUND INSULATION	/	+	++	/	+
 WATER RESISTANT	+	+	/	+	+
 WARM & COSY	+	+	++	+	+



NATURELAND



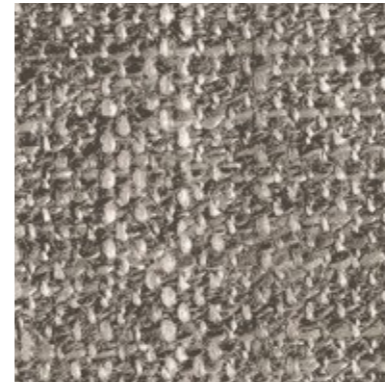
TATAMI SAVANE



SWISS OAK GOLDEN



BARMA BEIGE



GENTLEMAN TAUPE



DIESEL NALA



LCS17



GENTLEMAN TWEED



CARMEL



MIDWEST



ONKA HONEY



LC1



TATAMI RAFFIA



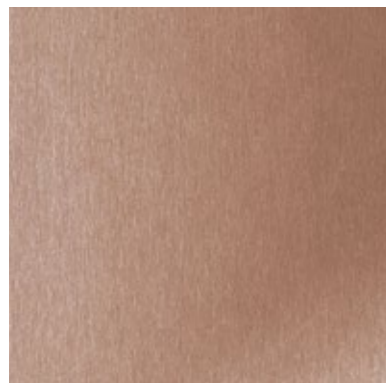
TATAMI SMOKED



ROUGH TEXTILE BEIGE



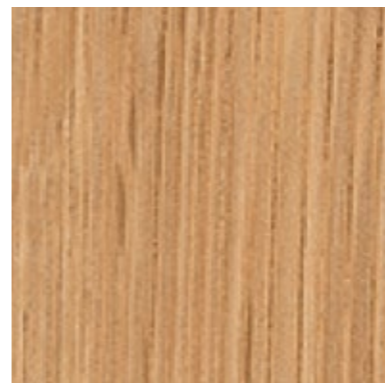
HONEY OAK



FIBER COPPER



ALBION



BALLERINA

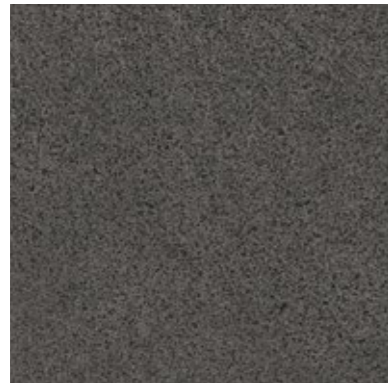


LCPSACE32

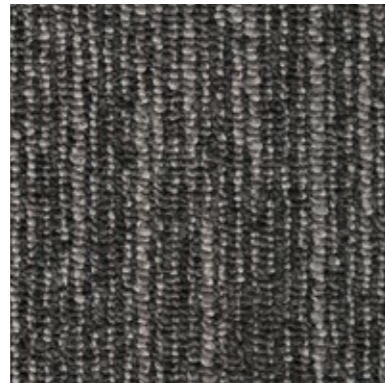




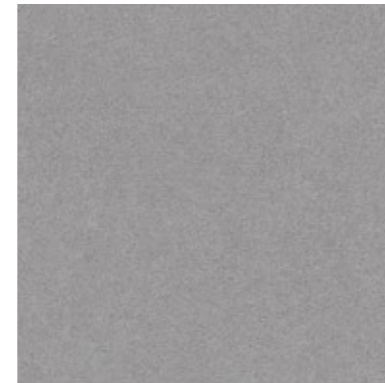
VINTAGE



PURE CONCRETE DARK



BASALT



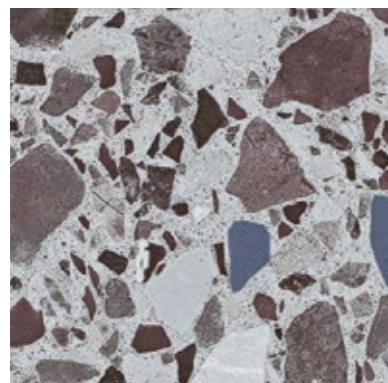
PURE CONCRETE MEDIUM



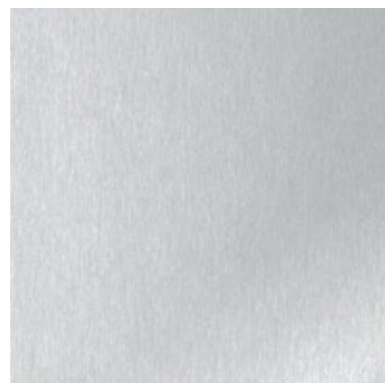
LC2



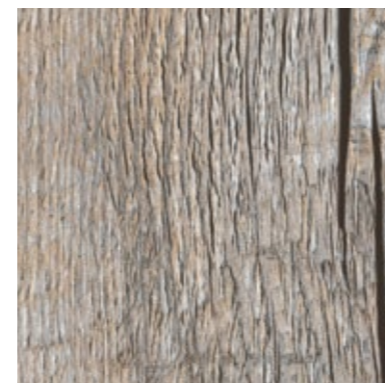
PARKER STATION



DALMA BURGUNDY



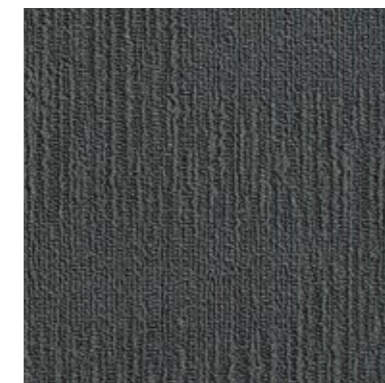
FIBER SILVER



PORTOBELLO



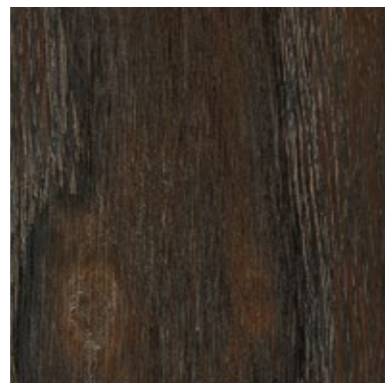
LCS18



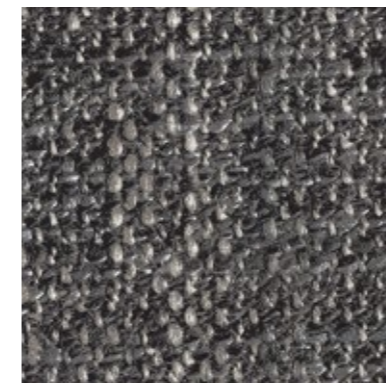
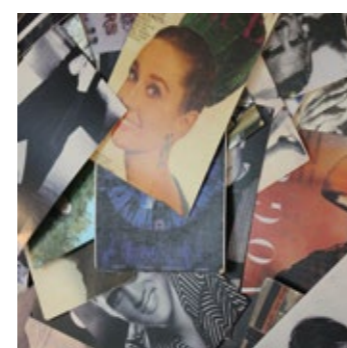
HIMLEY



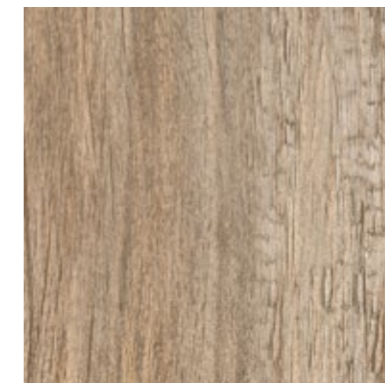
SWISS OAK PEARL



DIESEL BURNT



GENTLEMAN GREY



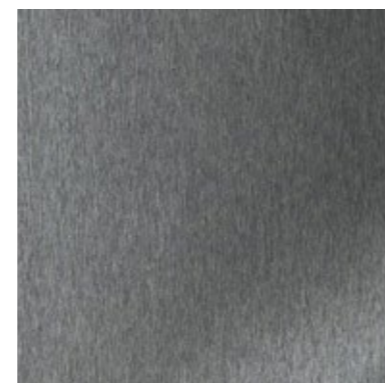
MOON ISLAND



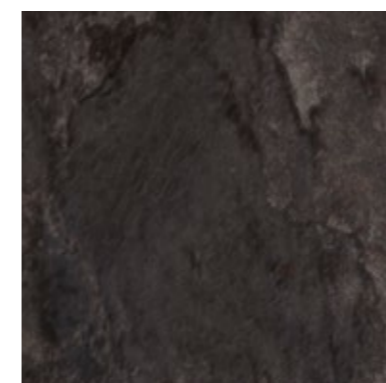
AMARANTE DARK



ROUGH TEXTILE GREY



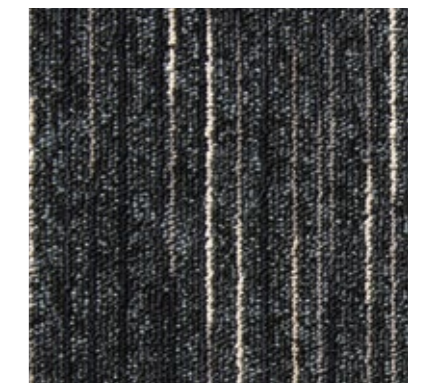
FIBER HEAVY METAL



NORVEGIAN STONE



AMADOR

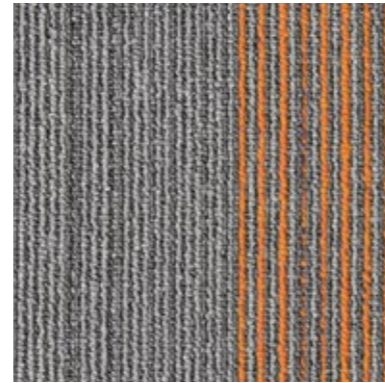


LCSPACE31

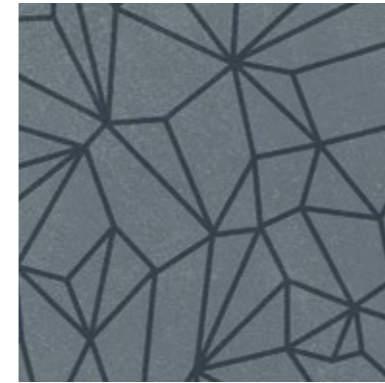
ARCHIGRAPHIC



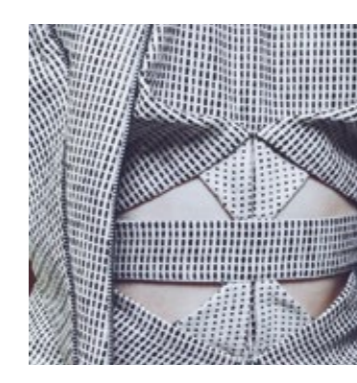
MOZAIIC GREY



AMBER



SPIDER BLUE



SAPPHIRE



SPIDER BEIGE



SLATE



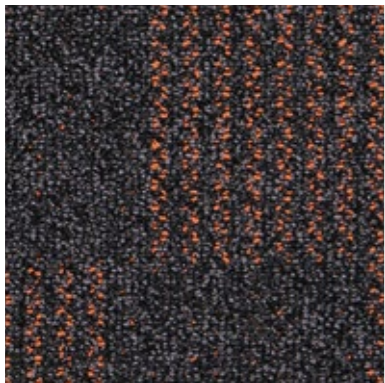
FIBER SILVER



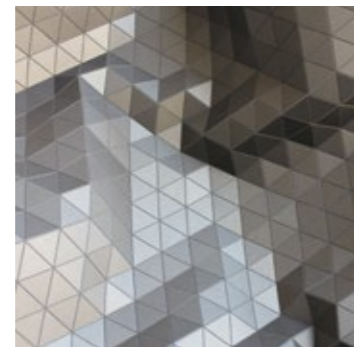
BLUE



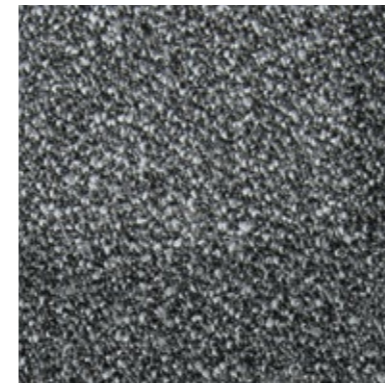
PONTO CRUZ NAVY



ORANGE



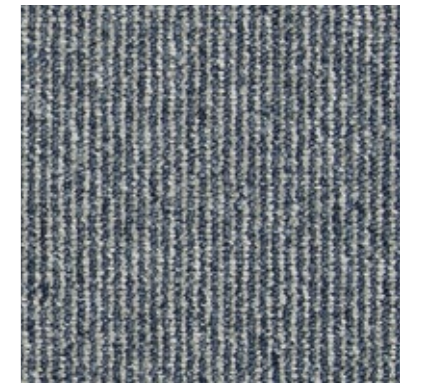
KADINA CITY



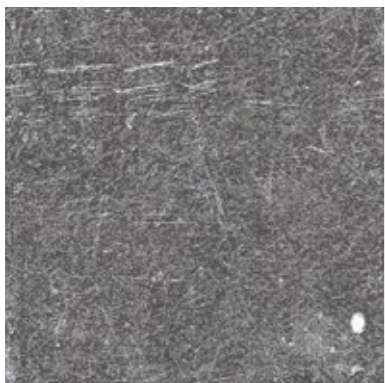
IRON



PURE CONCRETE LIGHT



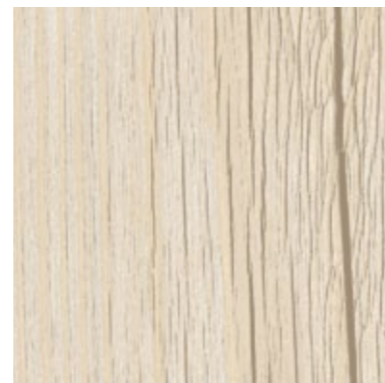
LCS15



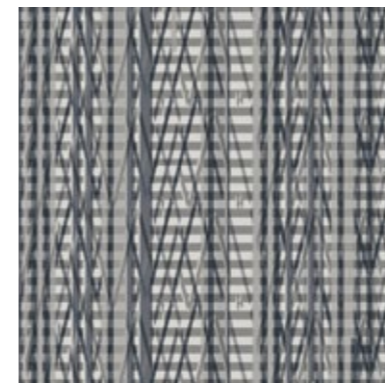
DOCK GREY



LCD22



MALUA BAY



PONTO CRUZ CITY

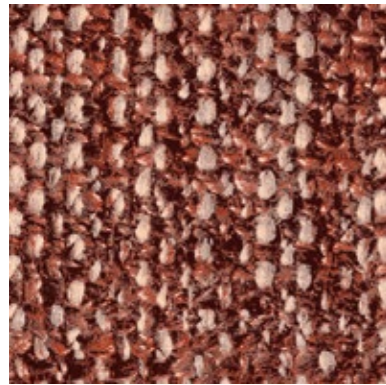


LC8





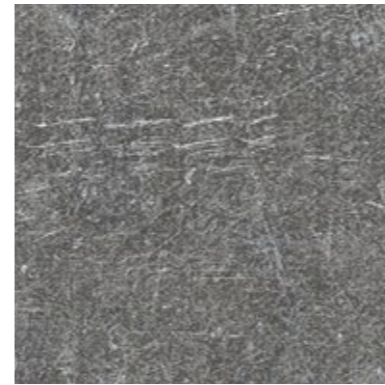
POP ICONS



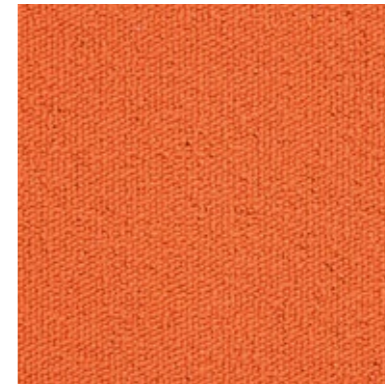
GENTLEMAN GARANCE



LC6



DOCK GREY



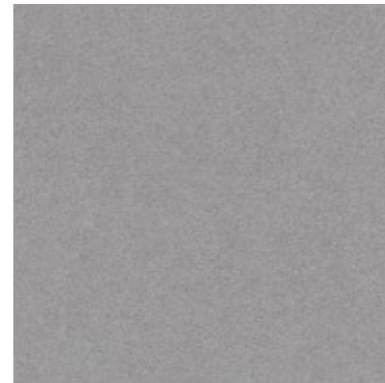
ORANGE



LC5



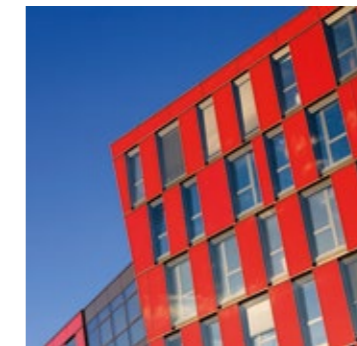
BALLERINA



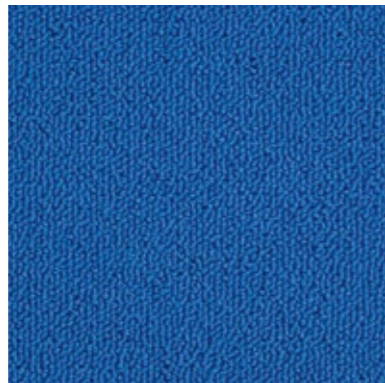
PURE CONCRETE MEDIUM



TWIST



PURE CONCRETE LIGHT



BLUE



RED



GREEN



GENTLEMAN INDIGO



GENTLEMAN BLUE



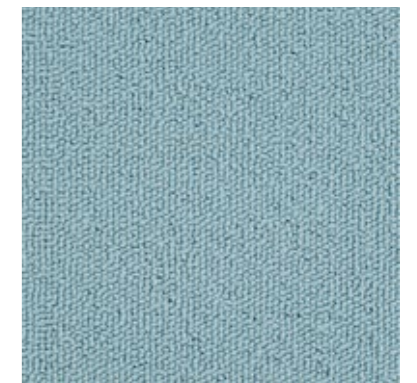
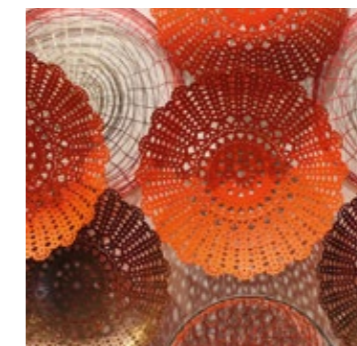
GOLD



DOCK TAUPE



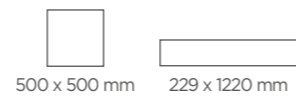
GENTLEMAN PEPPERMINT



SKY



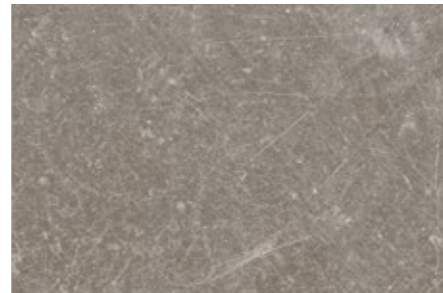
CREATION 55 LOOSELAY



0060 Arena



0448 Malua Bay



0618 Carmel



0504 Twist



0441 Honey Oak



0876 Ponto Cruz Navy



0456 Ranch



0347 Ballerina



0878 Ponto Cruz City



0447 Amador



0796 Swiss Oak Golden



0374 Parker Station



0846 Swiss Oak Pearl

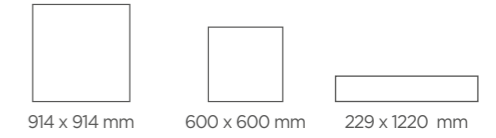


0455 Longboard

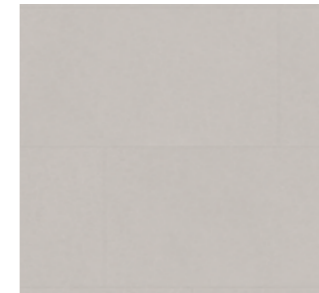


0860 Norwegian Stone

CREATION 70 LOOSELAY



1083 Gentleman Taupe



1060 Pure Concrete Light



1077 Tatami Savane



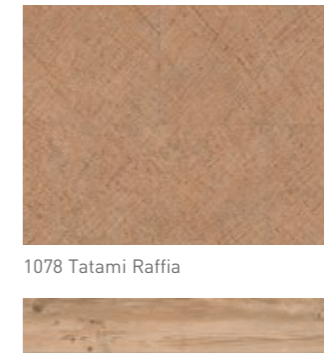
0538 Midwest



1076 Gentleman Tweed



1061 Pure Concrete Medium



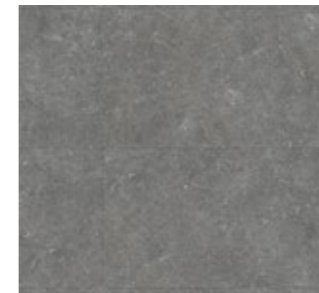
1078 Tatami Raffia



0356 Denim Wood



1080 Gentleman Garance



0085 Dock Grey



0358 Moon Island



0357 Portobello



1081 Gentleman Indigo



1058 Gentleman Grey



1054 Onka Honey



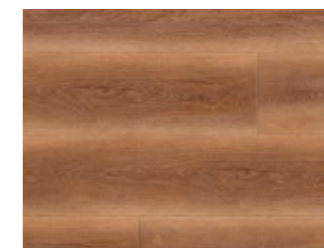
0087 Dock Taupe



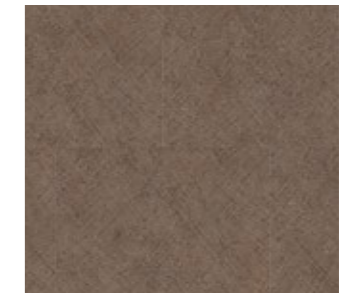
1082 Gentleman Peppermint



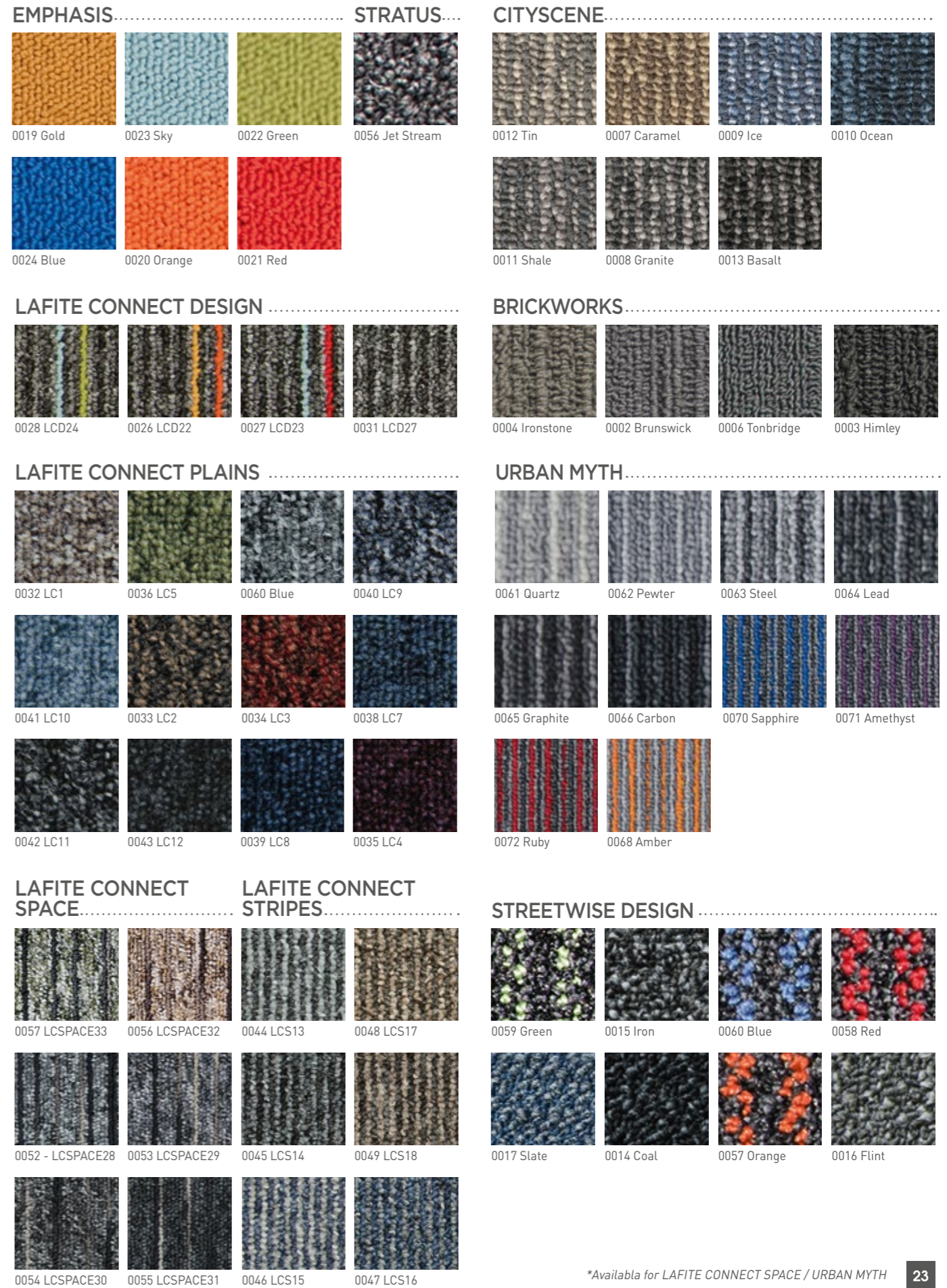
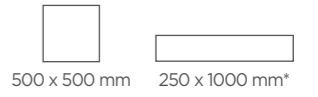
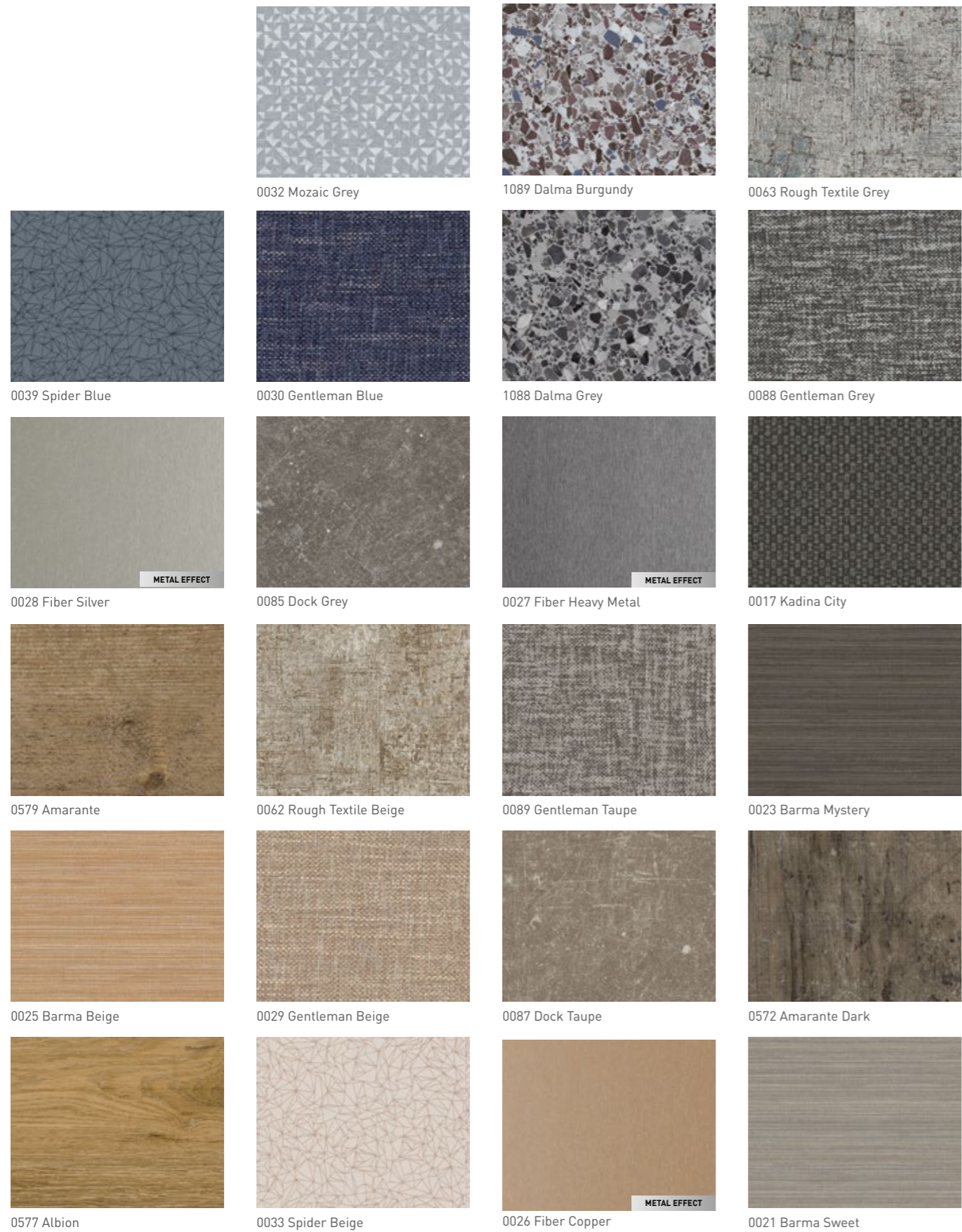
1062 Pure Concrete Dark



1075 Diesel Nala

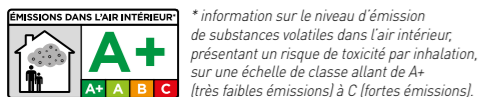


1079 Tatami Smoked



TECHNICAL DATA

CREATION 70 LOOSELAY / CREATION 55 LOOSELAY / SAGA²



	CREATION 70 LOOSELAY	CREATION 55 LOOSELAY	CREATION 55 LOOSELAY ACOUSTIC*	SAGA ²
--	----------------------	----------------------	--------------------------------	-------------------

DESCRIPTION

Total Thickness	EN ISO 24346	mm	6.00			4.50			5.50		4.60
	ASTM F386-02	inch	0.24			0.18			0.20		0.18
Thickness of the wearlayer	EN ISO 24340	mm	0.70			0.55			0.55		0.70
	ASTM F410-02	inch	0.03			0.02			0.02		0.03
Weight	EN ISO 23997	g/m ²	10000			7500			7600		5595
Size / Format	ISO 24342	mm	229 x 1220	600 x 600	914 x 914	229 x 1220	500 x 500	229x1220	500x500	500 x 500	
	ASTM F 536	inch	9" x 48"	23.6" x 23.6"	36" x 36"	9" x 48"	19.7" x 19.7"	9" x 48"	19.7" x 19.7"	19.685" x 19.685"	
Number of planks / tiles and sqm per box	-	-	6 / 1.68 m ²	4 / 1.44 m ²	2 / 1.67 m ²	8 / 2.23 m ²	8 / 2.0 m ²	8 / 2.23 m ²	8 / 2.0 m ²	10 / 2.5 m ²	

CLASSIFICATION

Norm/Product Specification	-	-	EN ISO 10582			EN ISO 10582			EN 651		EN 652
	ASTM F 1700-04	-	Class III Type B			Class III Type B			In progress		Class III Type B
European Classification	EN ISO 10874	Class	34 - 43			33 - 42			33 - 42		34-42
Classement UPEC	-	-	Pour pose dans des locaux classés U4P4E1/2C2			Pour pose dans des locaux classés U4P3E1/2C2			Pour pose dans des locaux classés U4P3E1/2C2		U4P3E2C2
Avis Technique	-	n°	Avis Technique en cours			12/19-1786			Avis Technique en cours		12/13-1655
Fire Rating	EN 13 501-1	Class	Bfl-s1			Bfl-s1			Bfl-s1		Bfl-s1
Static Electrical Propensity	EN 1815	kV	< 2			< 2			< 2		< 2
Slip Resistance Wet ⁽¹⁾	DIN 51130 /BGR 181	Class	R10			R10			R10		R10

PERFORMANCES

Wear Resistance	EN 660.2	mm ³	≤ 2.0			≤ 2.0			< 2.0		≤ 2.0
Wear Group	-	group	T			T			T		T
Type Binder content	ISO 10582	group	I			I			-		-
Dimensional stability (norm)	EN ISO 23999	%	≤ 0.15			≤ 0.15			≤ 0.15		≤ 0.15
Dimensional stability (average measured value)	-	%	≤ 0.05			≤ 0.05			≤ 0.05		-
Residual Indentation	EN ISO 24343-1	mm	≤ 0.10			≤ 0.10			≤ 0.20		< 0.13
Impact sound insulation	EN ISO 717-2	dB	9			7			19		15
Impact insulation class (IIC)	ASTM E492	dB	IIC - 56dB			-			IIC - 62dB		IIC - 58dB
Room Impact	NF S 31074	dB	73			73			70		65
Castor chair test (Type W)	ISO 4918	-	OK			OK			OK		OK
Thermal Conductivity	EN ISO 10456	W/(m.K)	0.25			0.25			0.25		0.25
Colour Fastness	EN 20 105 - B02	degree	≥ 6			≥ 6			≥ 6		≥ 6
Surface Treatment	-	-	PUR+ Matt			PUR+ Matt			PUR+ Matt		Protecsol®
Chemical Products Resistance ⁽²⁾	EN ISO 26987	-	OK			OK			OK		OK

ENVIRONMENT/INDOOR AIR QUALITY

TVOC after 28 days	ISO 16000-6	µg/m ³	< 10			< 10			< 10		< 10
Certification	-	-	-			-			-		Floorscore®

CE MARKING

CE	EN 14041	-									
----	----------	---	---------------------------------------------------------------------------------------	--	--	--	--	--	--	--	--

* January 2020

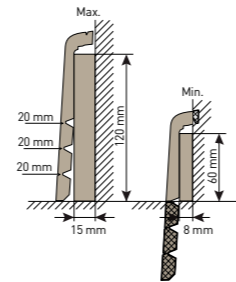
(1) Ramp test with oil / Schiefe Ebene / Plan incliné avec huile

(2) Beständig gegenüber nicht färbenden alkoholhaltigen Handdesinfektionsmitteln, Haushaltschemikalien und verdünnten Säuren und Laugen bei kurzzeitiger Einwirkung.

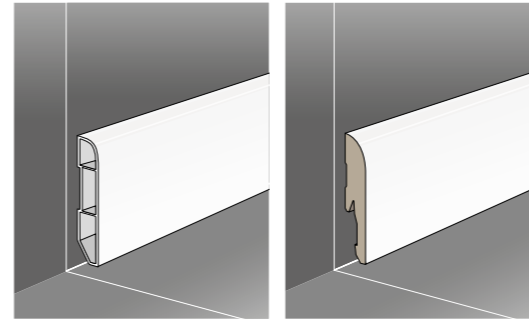


A FULL SET OF FINISHES

OTHER SKIRTINGS



COVER SKIRTING (MDF)*
Ref. 2550



VINYL DESIGN SKIRTING
Ref. 6086 + Colour code
White: Ref. 6086 S001

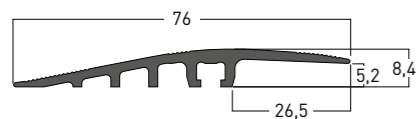
MDF DESIGN SKIRTING
Ref. 5947 + Colour code
White: Ref. 6086 S001



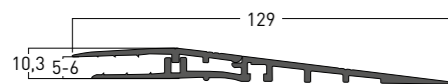
DESIGN SKIRTING

TRANSITION PROFILE

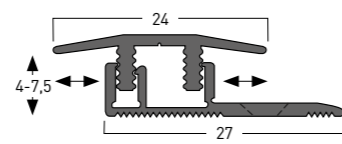
OTHER PROFILES



RAMP 5-6MM (aluminium)
Ref. 0505



LOOSELAY RAMP 5-6MM (aluminium)
Ref. 0609



SYMMETRIC DESIGN CLIP
Ref. 3351

ENTRANCE MATS

... 3 TRAFFIC LEVELS ...

QUICK MAT*
Ref. 8550

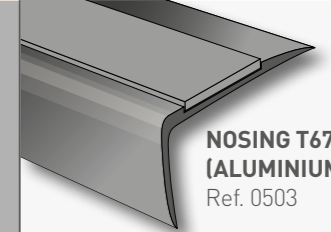
LOOSELAY ROMAT GT INSERT KIT
Ref. 1719

KIT ESPLANADE 9000
Ref. 1700

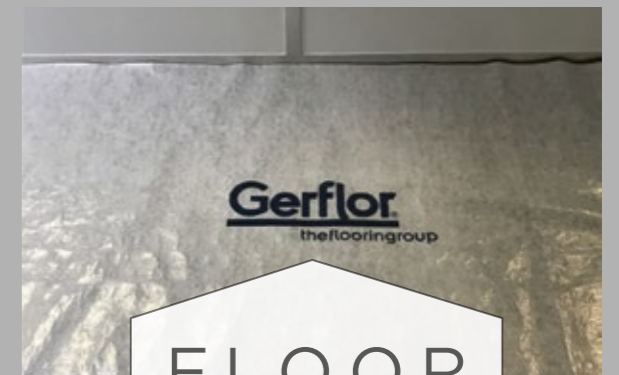
OTHER SOLUTIONS



STAIRNOSING SOLUTION



NOSING T67 (ALUMINIUM)
Ref. 0503



FLOOR PROTECTION

Ref. 058X

FOR MORE DETAILS

visit gerflor.com
LVT finishes brochure



Gerflor
the flooring group



Gerflor International
Tel: +33 (0)4 74 05 40 00
Fax: +33 (0)4 74 05 03 13
e-mail: gerflorcontract@gerflor.com

Visualize your reference



interiordesigner.gerflor.com

30 years experience
Since 1985

Manufacturer
3 LVT Factories

World Class Logistics
12 Logistics Hubs

Gerflor Design Centre
Exclusive Designs



“Serenity,,
Elodie - **End User**



“Time saving,,
Mika - **Installer**



“Unique Design,,
Pierre - **Architect**



“Confidence,,
Claire - **Store Manager**



“Reliability,,
Lucas - **Distributor**

That's why Gerflor is our **Reference**

Gerflor[®]
theflooringgroup